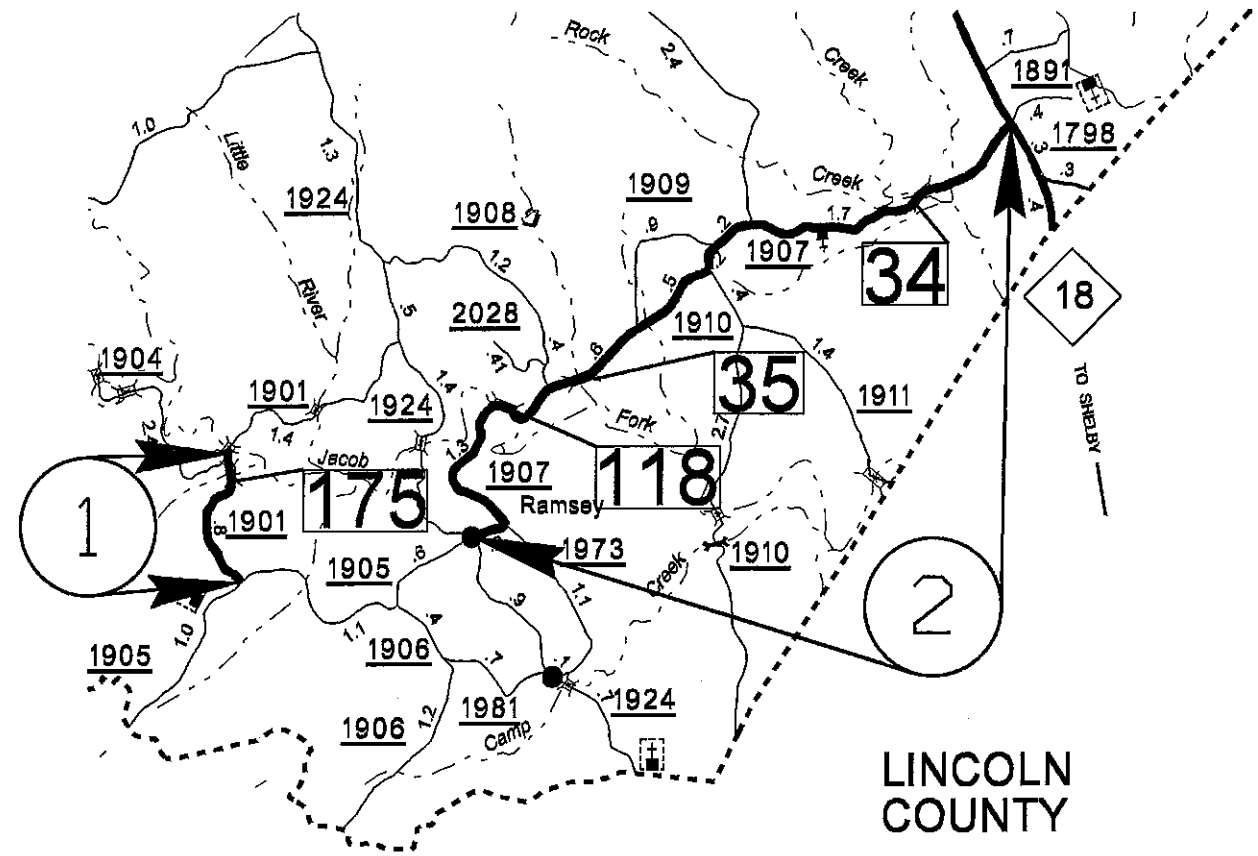
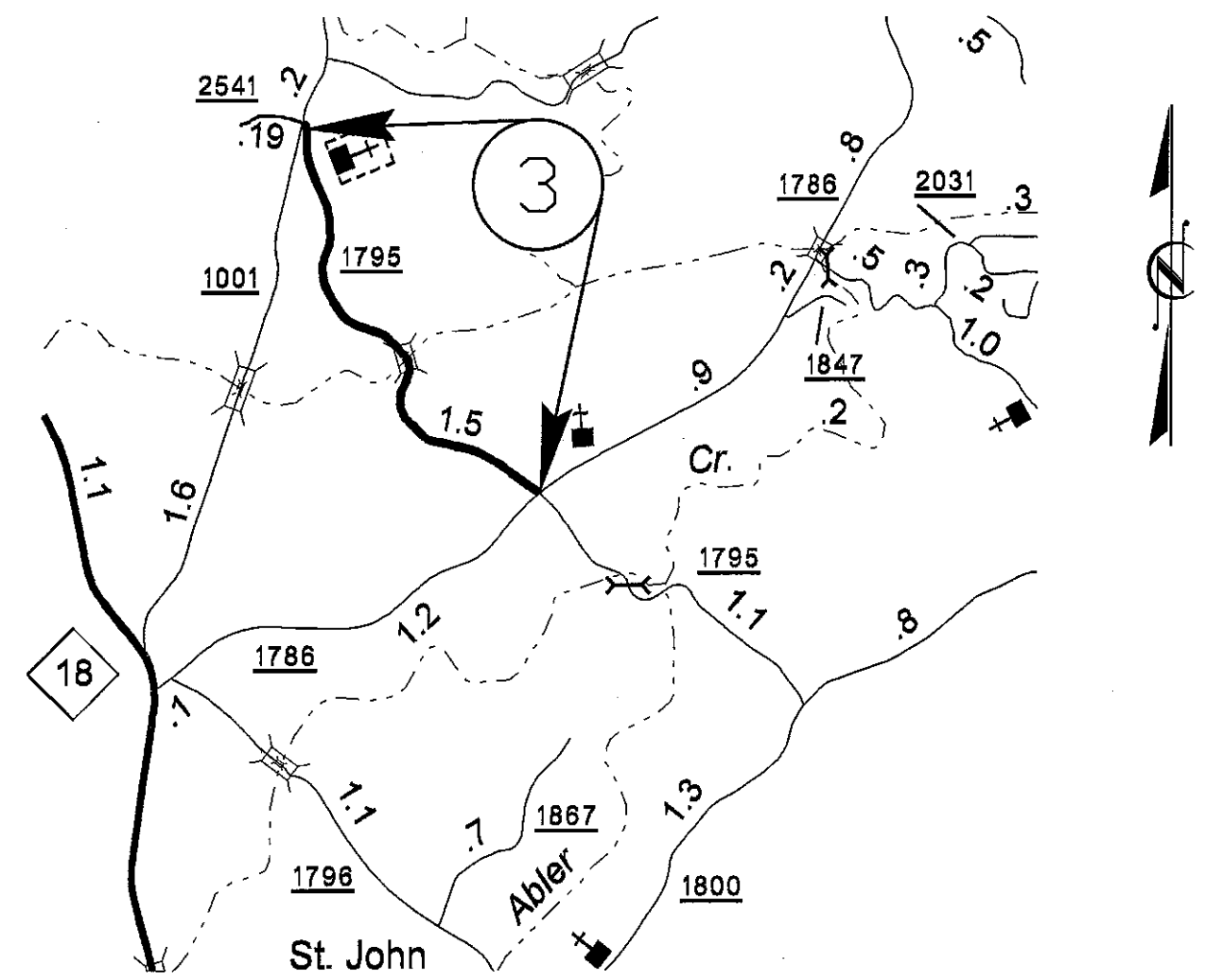


PROJECT NO.	SHEET NO.	TOTAL SHEETS
13CR.20121.13, 13CR.20591.13 13CR.20611.12, 13CR.20811.13	1	

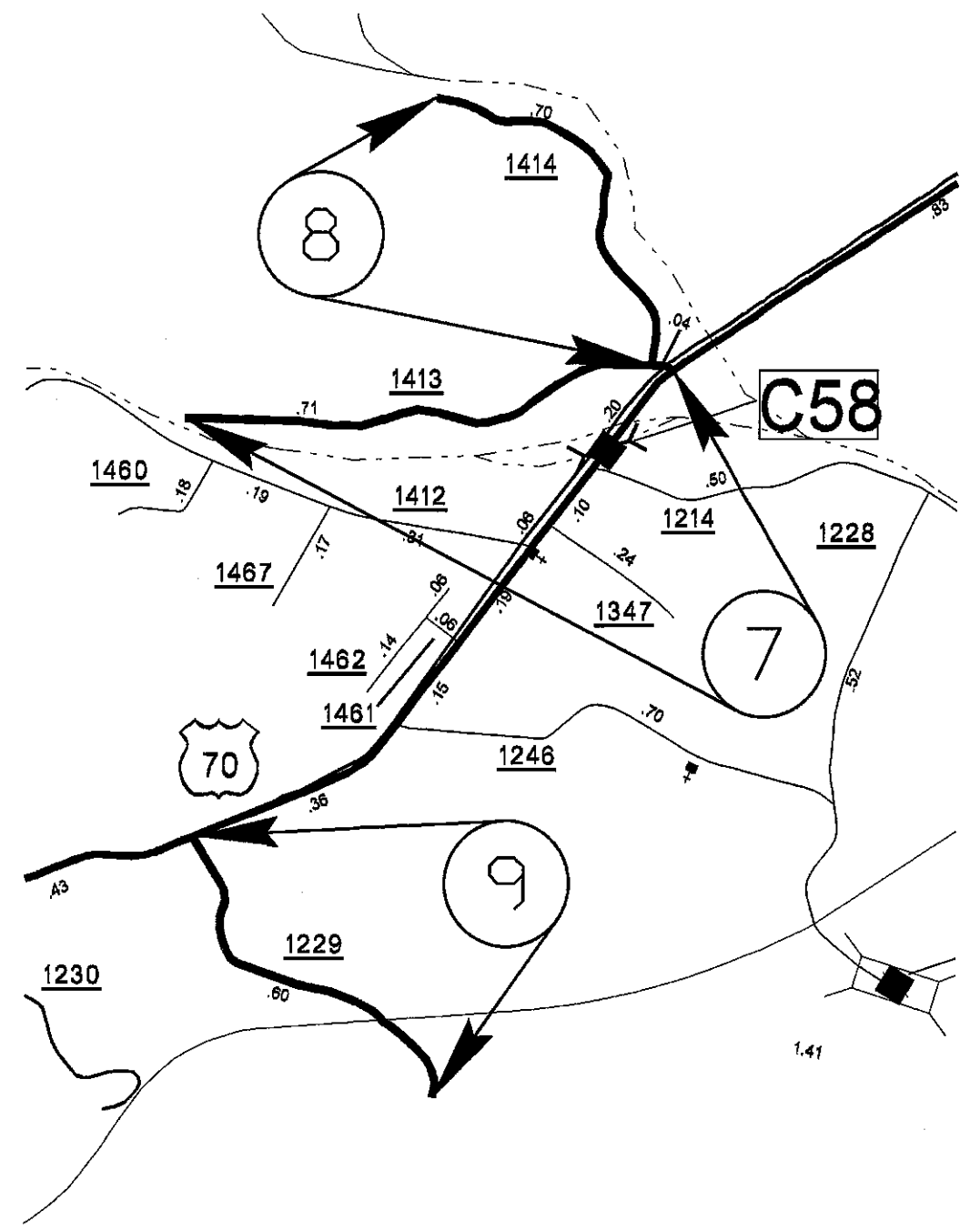
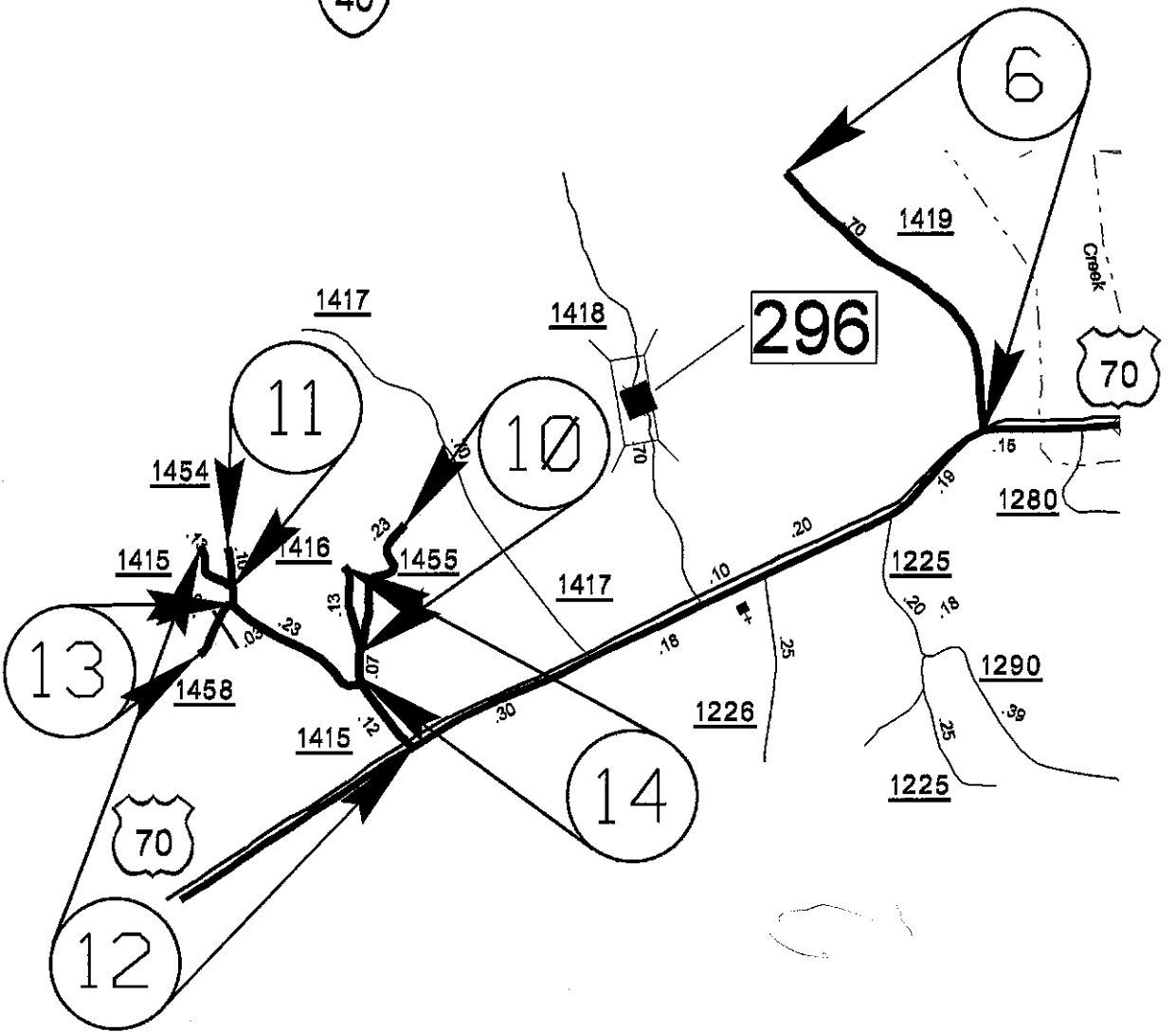
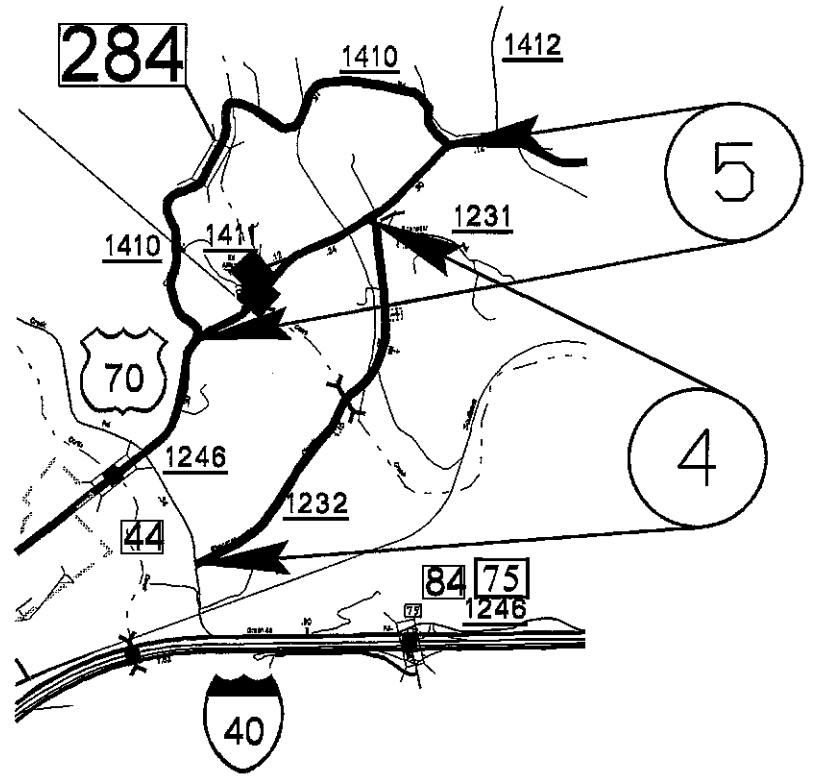


LINCOLN COUNTY



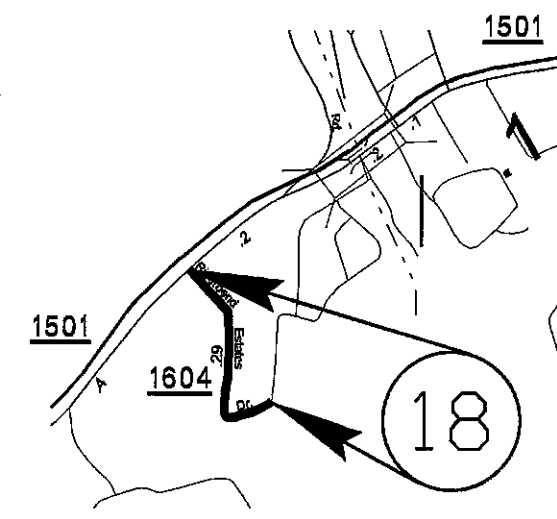
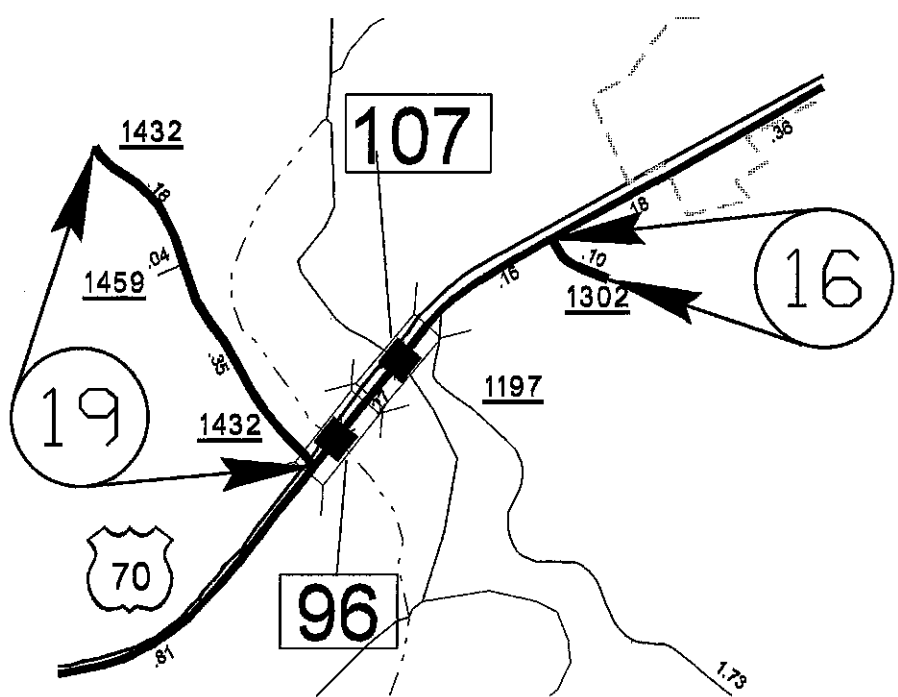
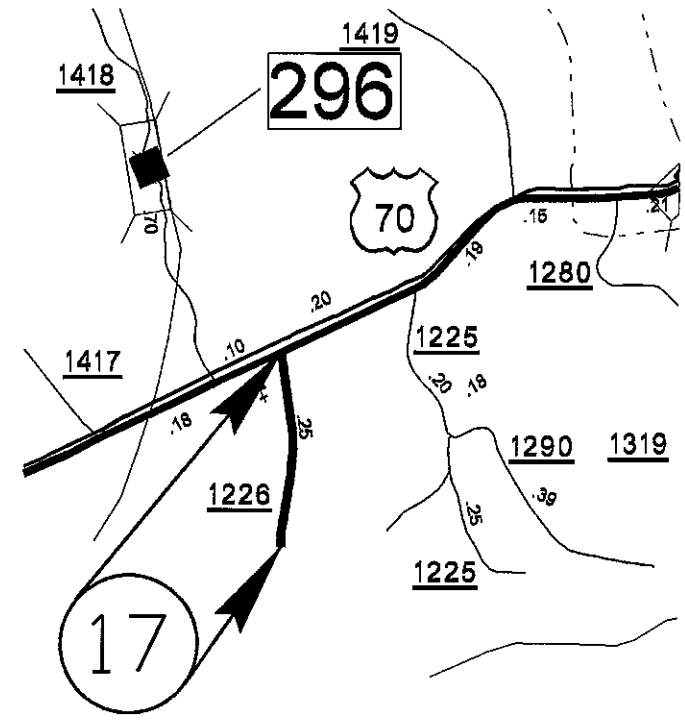
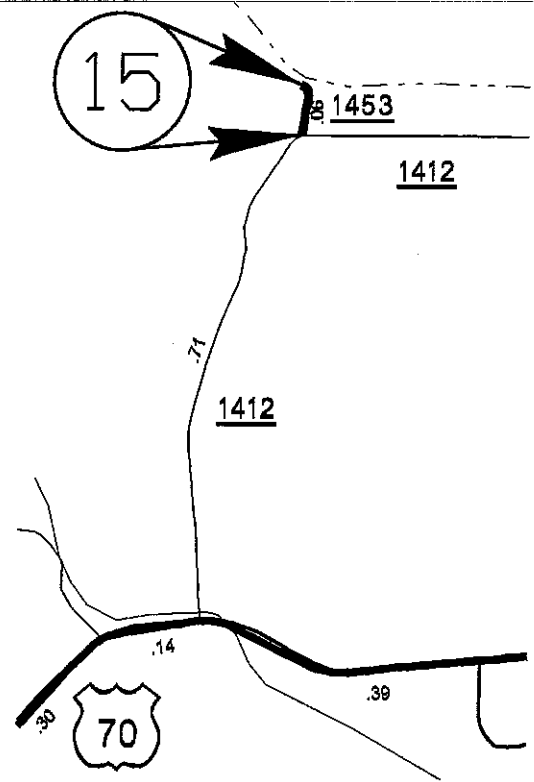
BURKE COUNTY

PROJECT NO.	SHEET NO.	TOTAL SHEETS
13CR.2012I.13, 13CR.2059I.13 13CR.2061I.12, 13CR.2081I.13	2	



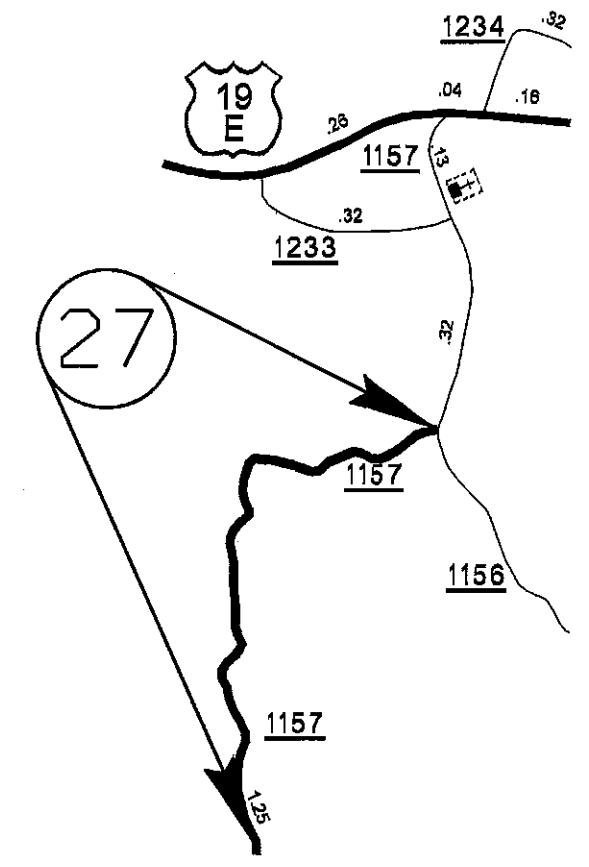
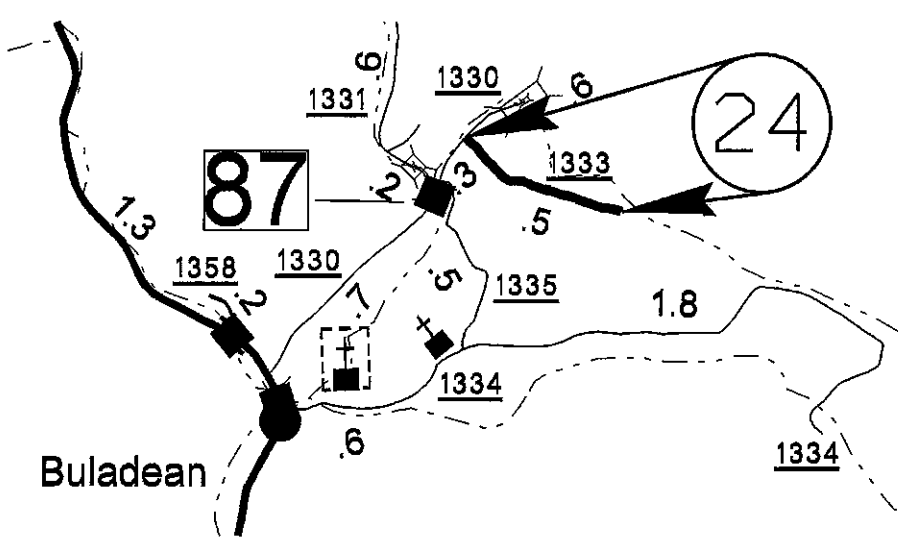
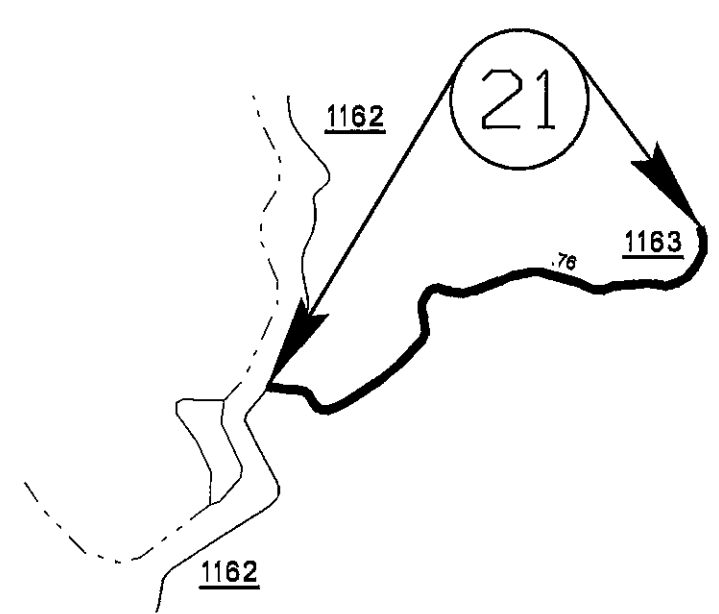
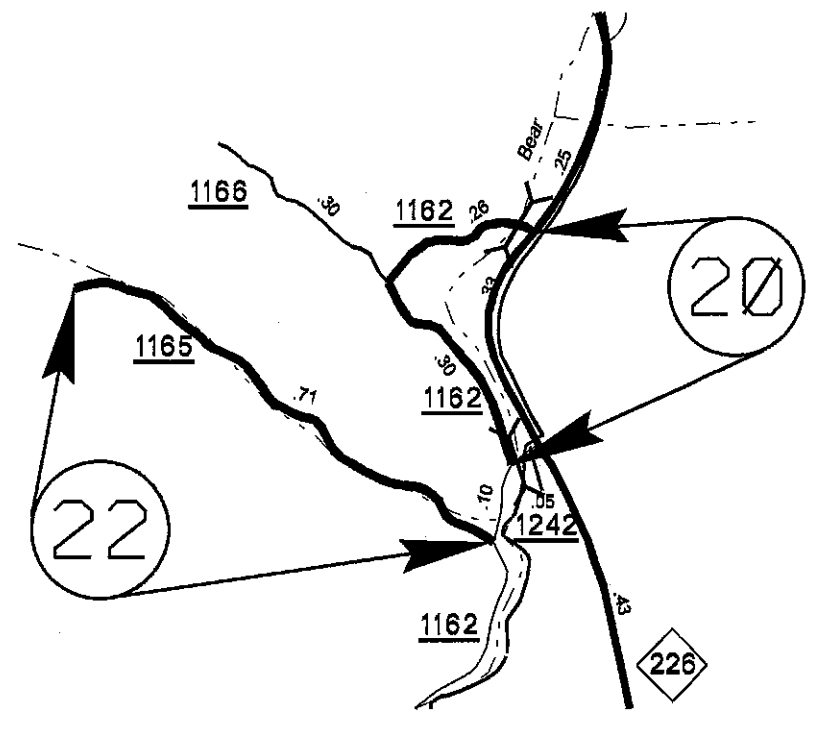
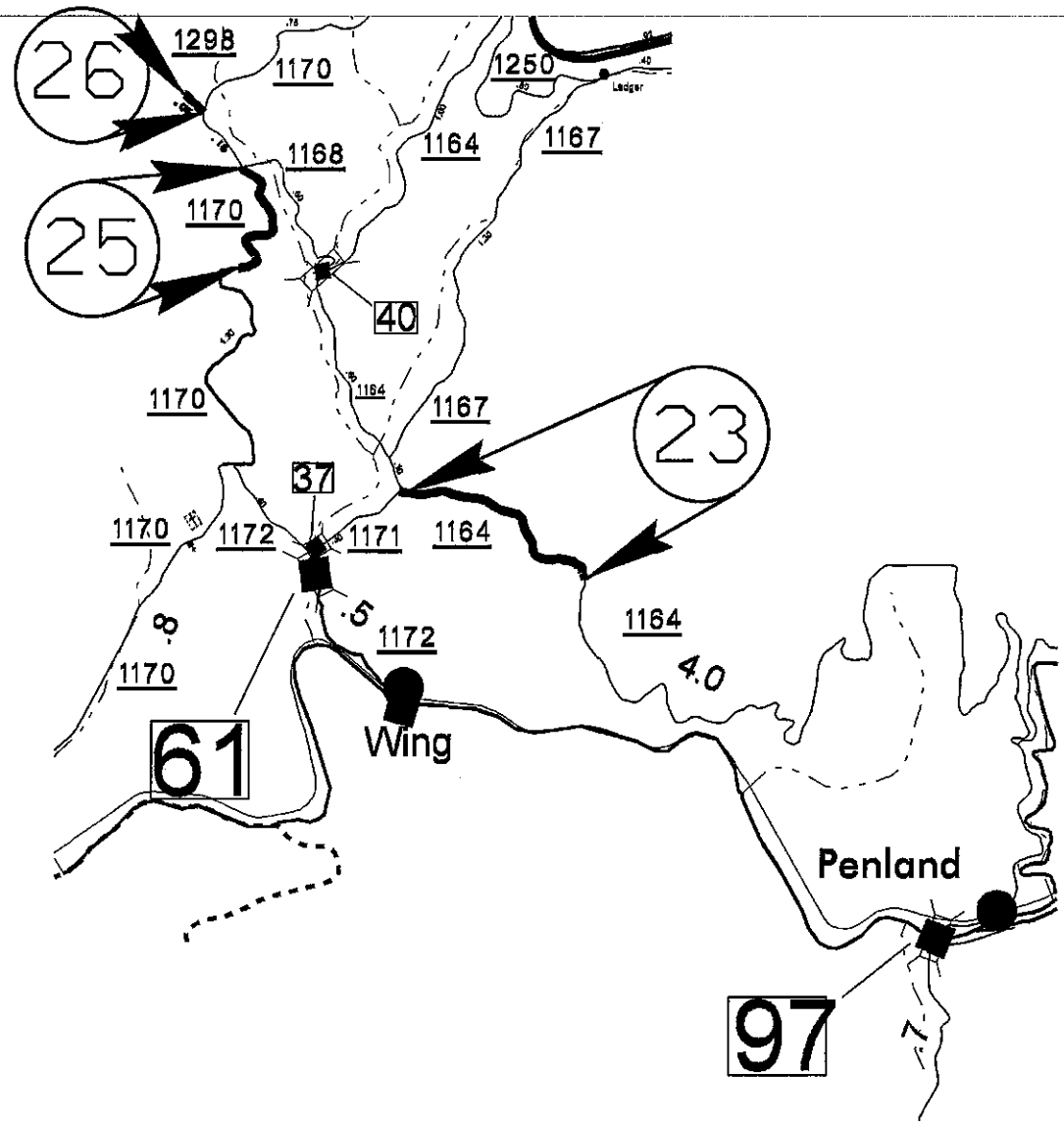
McDOWELL COUNTY

PROJECT NO.	SHEET NO.	TOTAL SHEETS
13CR.20121.13, 13CR.20591.13 13CR.20611.12, 13CR.20811.13	3	



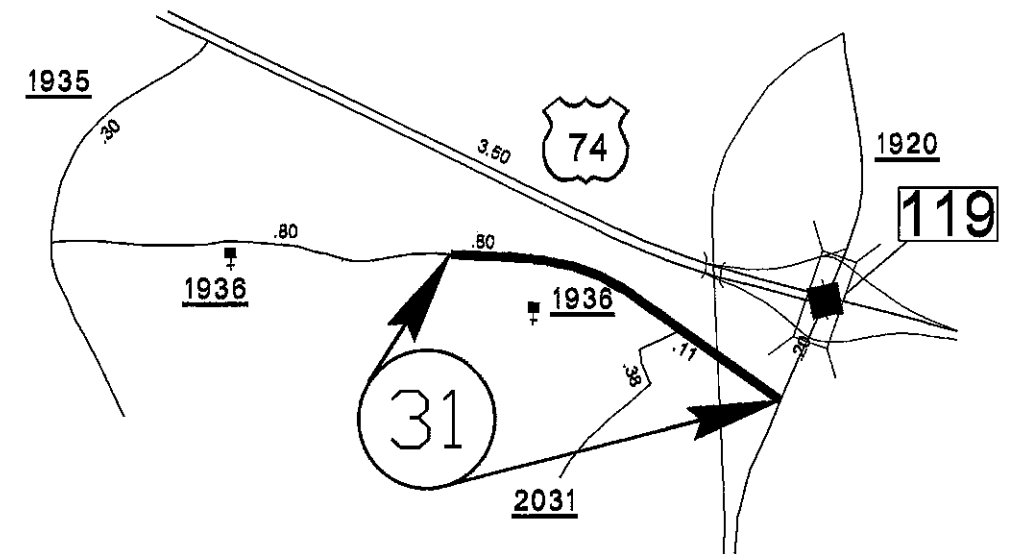
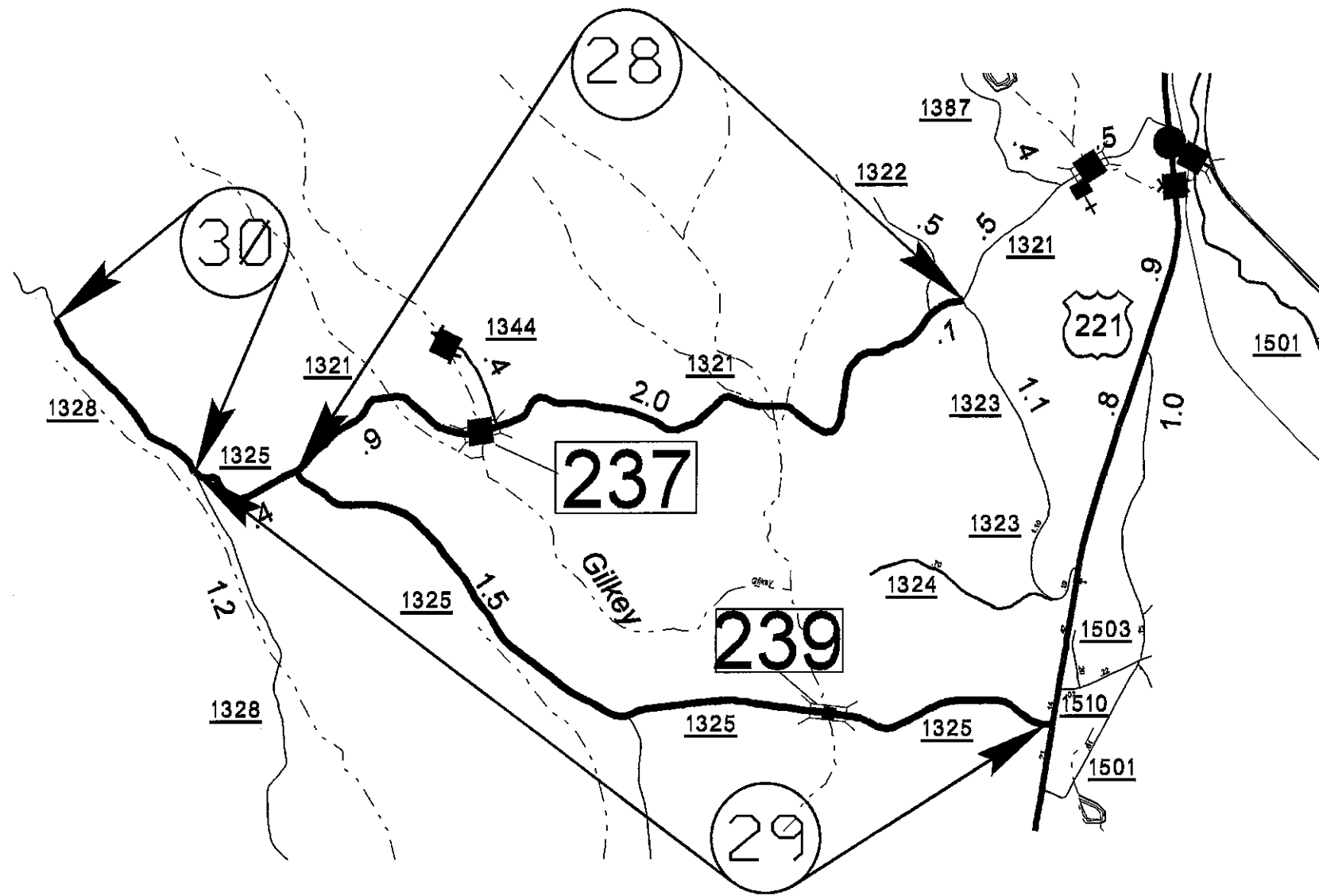
McDOWELL COUNTY

PROJECT NO.	SHEET NO.	TOTAL SHEETS
13CR.2012I.13, 13CR.2059I.13 13CR.2061I.12, 13CR.2081I.13	4	



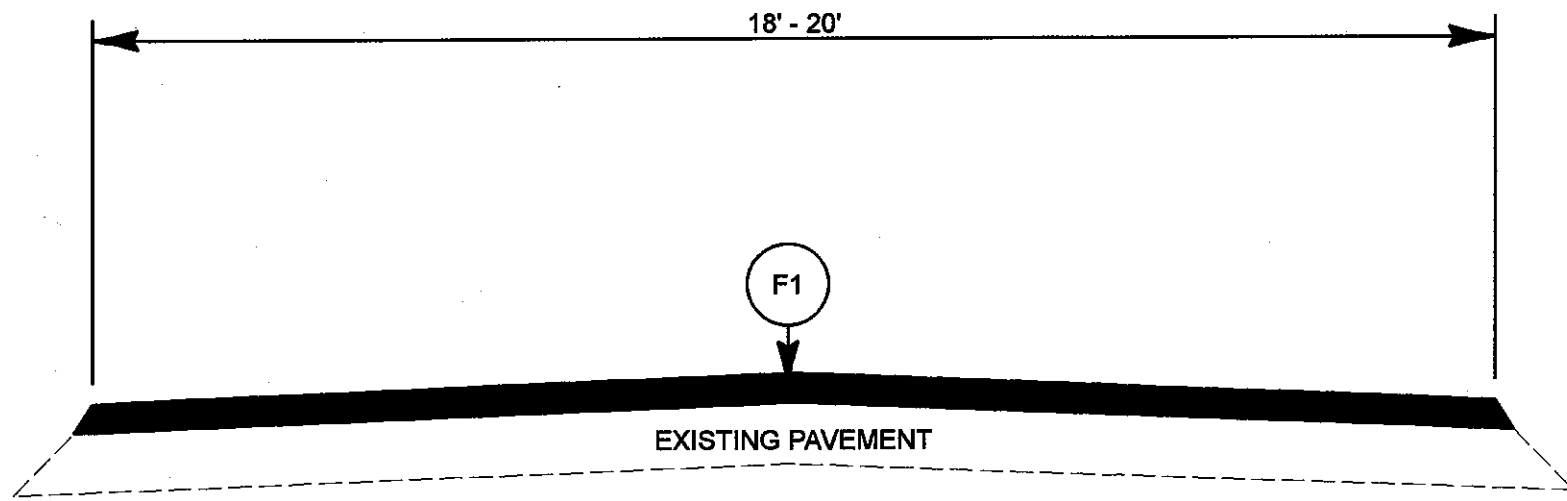
MITCHELL COUNTY

PROJECT NO.	SHEET NO.	TOTAL SHEETS
13CR.20121.13, 13CR.20591.13 13CR.20611.12, 13CR.20811.13	5	

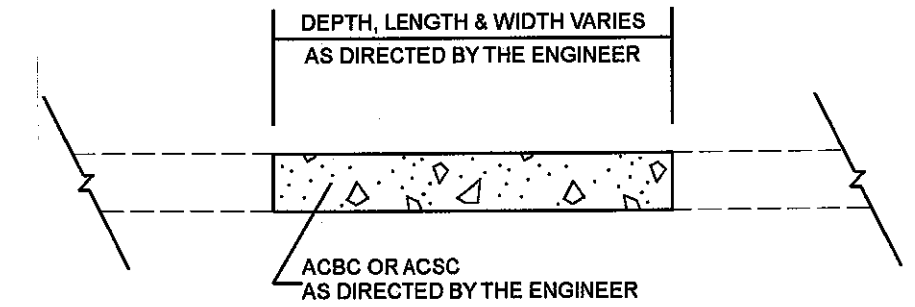


RUTHERFORD COUNTY

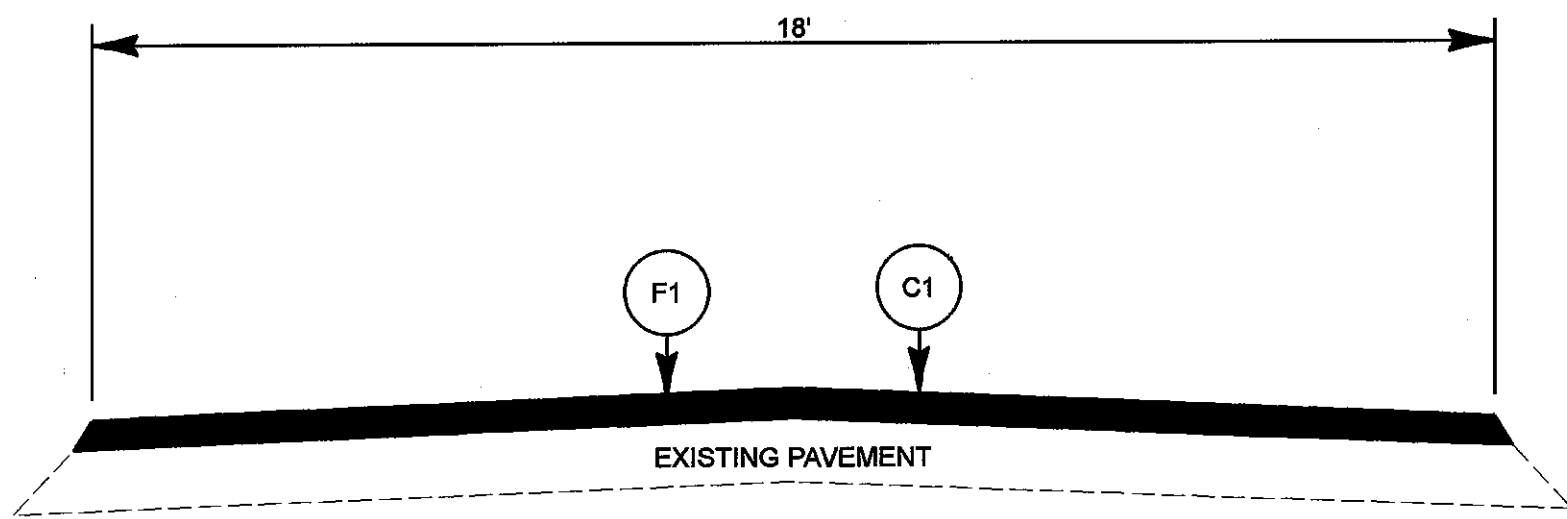
PROJECT NO.	SHEET NO.	TOTAL SHEETS
13CR.20121.13, 13CR.20591.13 13CR.20611.12, 13CR.20811.13	6	



TYPICAL SECTION NO. 1



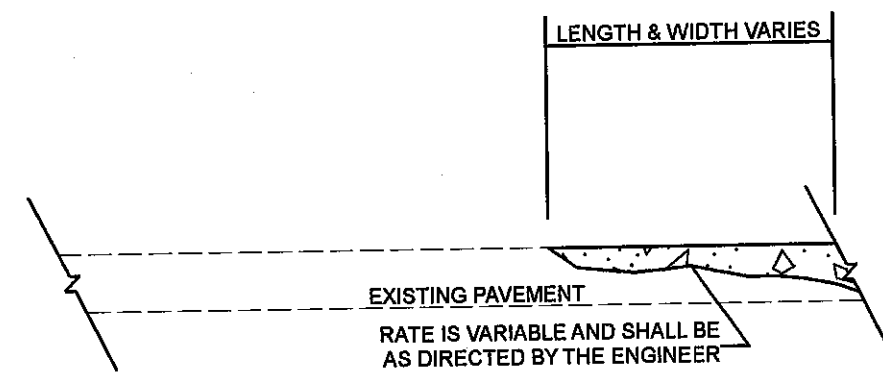
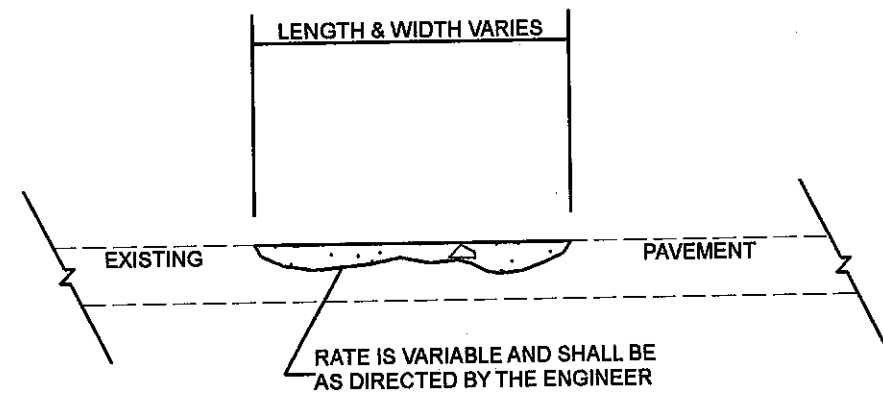
PATCHING EXISTING PAVEMENT



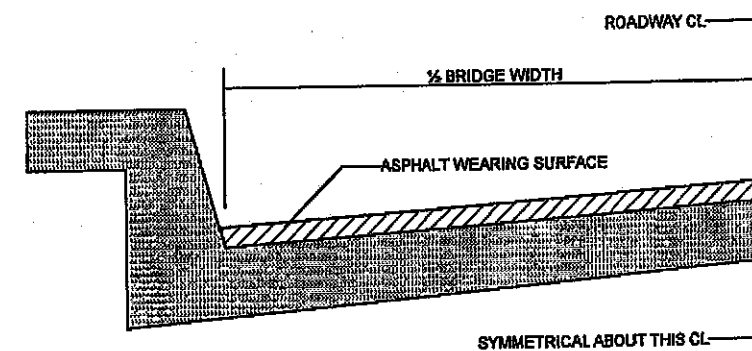
TYPICAL SECTION NO. 2

PAVEMENT SCHEDULE	
C1	ASPHALT CONC SURFACE COURSE, TYPE SF9.5A (LEVELING COURSE) AS DIRECTED BY THE ENGINEER
F1	ASPHALT SURFACE TREATMENT, SPLIT SEAL

PROJECT NO.	SHEET NO.	TOTAL SHEETS
13CR.20121.13, 13CR.20591.13 13CR.20611.12, 13CR.20811.13	7	



ASPHALT CONCRETE SURFACE COURSE
(LEVELING COURSE)



BRIDGE HALF TYPICAL SECTION
FOR BRIDGES WITH FLOOR DRAINS, CARE SHALL BE EXERCISED IN PLACING THE WEARING SURFACE AROUND FLOOR DRAINS SO AS NOT TO HINDER EFFECTIVE DRAINAGE. ALL DRAINS SHALL BE LEFT OPEN

THE PROPOSED WEARING SURFACE SHALL VARY IN THICKNESS AS NECESSARY TO PROVIDE A SMOOTH RIDING SURFACE. THE MINIMUM THICKNESS SHOULD DEPEND ON PAVEMENT TYPE AS FOLLOWS: S4.75A 1/2", SFB.5A 1.0", S6.5X 1.0", S12.5X 2.0", ULTRATHIN HOT MIX ASPHALT-TYPE A 1/2", ULTRATHIN HOT MIX ASPHALT-TYPE B 5/8", ULTRATHIN HOT MIX ASPHALT-TYPE C 3/4". THE MAXIMUM THICKNESS SHOULD DEPEND ON PAVEMENT TYPE AS FOLLOWS: S4.75A 1.0", SFB.5A 1.0", S6.5X 2.0", S12.5X 2.0", ULTRATHIN HOT MIX ASPHALT-TYPE A 3/4", ULTRATHIN HOT MIX ASPHALT-TYPE B 6/8", ULTRATHIN HOT MIX ASPHALT-TYPE C 1/2".

NOTES
ALL UNPAVED ROADS TO BE RESURFACED 50' FROM EDGE OF PAVEMENT OF MAIN PROJECT.
ALL PAVED S.R. ROADS TO BE RESURFACED TO THE ENDS OF THE RADI, OR AS DIRECTED BY THE ENGINEER.
EDGES, PAVEMENT WIDENING, INTERSECTIONS AND BRIDGE FLARES ARE INCLUDED IN THE TABLE OF QUANTITIES.
SHOULDERS AND DITCHES ARE TO BE CONSTRUCTED BY OTHERS UNLESS OTHERWISE INDICATED.
BRIDGES ARE TO BE RESURFACED AT LOCATIONS AND TO DEPTH AS DIRECTED BY THE ENGINEER.

PROJECT NO.	SHEET NO.	TOTAL NO.
13cr.20121.13, 13cr.20591.13 13cr.20611.12, ETC.	8	

SUMMARY OF QUANTITIES

PROJECT NO	COUNTY	MAP NO	ROUTE	DESCRIPTION	TYP	LANES	LANE TYPE	FINAL SURFACE TESTING REQUIRED	WARM MIX ASPHALT REQUIRED	LENGTH MI	WIDTH FT	ASPHALT CONC SURFACE COURSE, TYPE SF9.5A (LEVELING COURSE)	ASPHALT BINDER FOR PLANT MIX	PATCHING EXISTING PAVEMENT	ASPHALT SURFACE TREATMENT, SPLIT SEAL
												TON	TON	TON	SY
13cr.20121.13	Burke	1	SR 1901	FROM SR 1904 TO SR 1905 (MP 1.35 - MP 2.21)	1	2	2WU	NO	NO	0.85	20			100	9,973
13cr.20121.13	Burke	2	SR 1907	FROM SR 1924 TO NC 18 (MP 0.00 - MP 4.71)	1	2	2WU	NO	NO	4.71	18			1,200	49,738
13cr.20121.13	Burke	3	SR 1795	FROM SR 1786 TO SR 1001 (MP 1.08 - MP 2.543)	1	2	2WU	NO	NO	1.46	18			100	15,418
TOTAL FOR PROJ NO. 13cr.20121.13										7.02				1,400	75,129
13cr.20591.13	McDowell	4	SR 1232	FROM SR 1246 TO US 70 (MP 0.00 - MP 1.15)	1	2	2WU	NO	NO	1.15	18				12,144
13cr.20591.13	McDowell	5	SR 1410	FROM US 70 TO US 70 (MP 0.00 - MP 1.53)	1	2	2WU	NO	NO	1.53	18				16,157
13cr.20591.13	McDowell	6	SR 1419	FROM US 70 TO E.O.M. (MP 0.00 - MP 0.51)	1	2	2WU	NO	NO	0.51	18				5,386
13cr.20591.13	McDowell	7	SR 1413	FROM US 70 TO E.O.M. (MP 0.00 - MP 0.77)	1	2	2WU	NO	NO	0.77	18				8,131
13cr.20591.13	McDowell	8	SR 1414	FROM SR 1413 TO E.O.M. (MP 0.00 - MP 0.63)	1	2	2WU	NO	NO	0.63	18				6,653
13cr.20591.13	McDowell	9	SR 1229	FROM US 70 TO E.O.M. (MP 0.00 - MP 0.60)	1	2	2WU	NO	NO	0.6	18				6,336
13cr.20591.13	McDowell	10	SR 1455	FROM SR 1416 TO E.O.M. (MP 0.00 - MP 0.22)	1	2	2WU	NO	NO	0.22	18				2,323
13cr.20591.13	McDowell	11	SR 1454	FROM SR 1415 TO E.O.M. (MP 0.00 - MP 0.06)	1	2	2WU	NO	NO	0.06	18				634
13cr.20591.13	McDowell	12	SR 1415	FROM US 70 TO E.O.M. (MP 0.00 - MP 0.46)	1	2	2WU	NO	NO	0.46	18				4,858
13cr.20591.13	McDowell	13	SR 1458	FROM SR 1415 TO E.O.M. (MP 0.00 - MP 0.09)	1	2	2WU	NO	NO	0.09	18				950
13cr.20591.13	McDowell	14	SR 1416	FROM SR 1415 TO E.O.M. (MP 0.00 - MP 0.18)	1	2	2WU	NO	NO	0.18	18				1,901
13cr.20591.13	McDowell	15	SR 1453	FROM SR 1412 TO E.O.M. (MP 0.00 - MP 0.08)	1	2	2WU	NO	NO	0.08	18				845
13cr.20591.13	McDowell	16	SR 1302	FROM US 70 TO E.O.M. (MP 0.00 - MP 0.24)	1	2	2WU	NO	NO	0.24	18				2,534
13cr.20591.13	McDowell	17	SR 1226	FROM US 70 TO E.O.M. (MP 0.00 - MP 0.26)	1	2	2WU	NO	NO	0.26	18				2,746
13cr.20591.13	McDowell	18	SR 1604	FROM SR 1501 TO E.O.M. (MP 0.00 - MP 0.29)	1	2	2WU	NO	NO	0.29	18				3,062
13cr.20591.13	McDowell	19	SR 1432	FROM US 70 TO E.O.M. (MP 0.00 - MP 0.54)	1	2	2WU	NO	NO	0.54	18				5,702
TOTAL FOR PROJ NO. 13cr.20591.13										7.61					80,362
13cr.20611.12	Mitchell	20	SR 1162	FROM SR 1242 TO NC 225 (MP 3.74 - MP 4.30)	1	2	2WU	NO	NO	0.56	18				5,914
13cr.20611.12	Mitchell	21	SR 1163	FROM SR 1162 TO E.O.M. (MP 0.00 - MP 0.78)	1	2	2WU	NO	NO	0.78	18				8,237
13cr.20611.12	Mitchell	22	SR 1165	FROM SR 1162 TO E.O.M. (MP 0.00 - MP 0.71)	1	2	2WU	NO	NO	0.71	18				7,498
13cr.20611.12	Mitchell	23	SR 1164	FROM E.O.P. TO SR 1171 (MP 3.46 - MP 3.96)	1	2	2WU	NO	NO	0.5	18				5,280
13cr.20611.12	Mitchell	24	SR 1333	FROM SR 1330 TO E.O.M. (MP 0.00 - MP 0.50)	1	2	2WU	NO	NO	0.5	18				5,280
13cr.20611.12	Mitchell	25	SR 1170	FROM SR 1168 TO E.O.P. (MP 3.081 - MP 2.697)	1	2	2WU	NO	NO	0.39	18				4,118
13cr.20611.12	Mitchell	26	SR 1298	FROM SR 1170 TO E.O.M. (MP 0.00 - MP 0.08)	1	2	2WU	NO	NO	0.08	18				845
13cr.20611.12	Mitchell	27	SR 1157	FROM SR 1156 TO E.O.M. (MP 0.46 - MP 1.12)	1	2	2WU	NO	NO	0.66	18				6,970
TOTAL FOR PROJ NO. 13cr.20611.12										4.18					44,142
13cr.20811.13	Rutherford	28	SR 1321	FROM SR 1323 TO SR 1325 (MP 1.015 - MP 3.855)	1	2	2WU	NO	NO	2.84	18			500	29,990
13cr.20811.13	Rutherford	29	SR 1325	FROM US 221 TO SR 1328 (MP 0.00 TO MP 3.45)	1	2	2WU	NO	NO	3.45	18			700	36,432
13cr.20811.13	Rutherford	30	SR 1328	FROM SR 1325 TO PAVEMENT CHANGE (MP 5.38 - MP 6.01)	2	2	2WU	NO	NO	0.63	18	100	6	400	6,653
13cr.20811.13	Rutherford	31	SR 1936	FROM SR 1920 TO 0.50 MILES FROM SR 1920 (MP 0.0 - MP 0.50)	1	2	2WU	NO	NO	0.5	18			232	5,280
TOTAL FOR PROJ NO. 13cr.20811.13										7.42		100	6	1,832	78,355
GRAND TOTAL										26.23		100	6	3,232	277,988

